

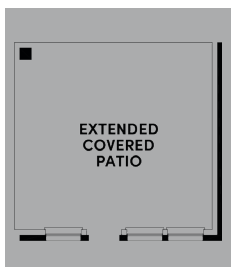


Floor Plan Details

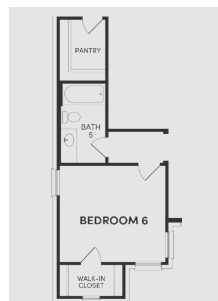
3,404 - 3,419 sq. ft. | 4 bedrooms | 3.5 baths | 2-car garage | Plan #5506



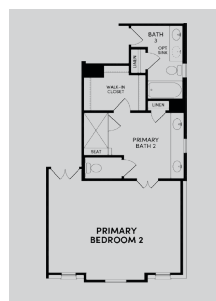
ADDITIONAL OPTIONS:



Ext. Cov. Patio



Bedroom 6/
Bath 5



Primary
Bedroom 2



Bedroom 5/
Bath 4

Roanoke: Available Elevation Options



TRADITIONAL



MODERN PRAIRIE



MODERN EUROPEAN