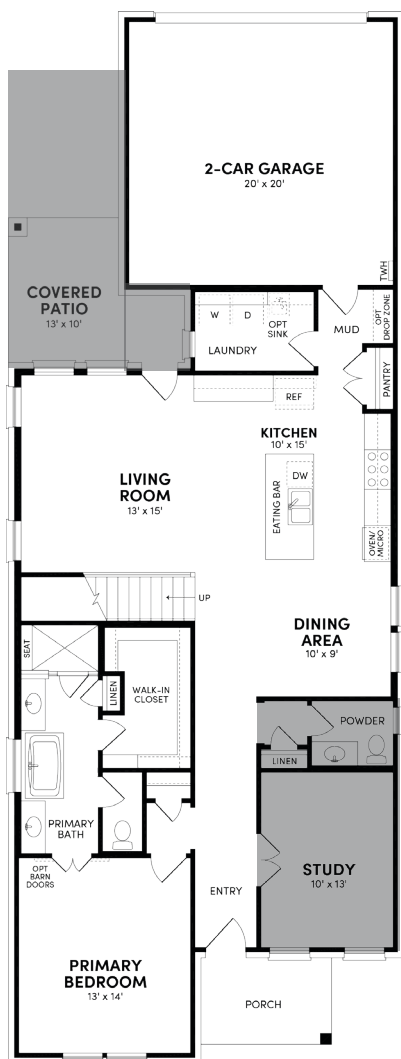


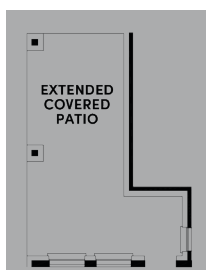


Floor Plan Details

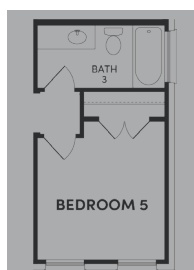
2,632 - 2,653 sq. ft. | 4 bedrooms | 2.5 baths | 2-car garage | Plan #4500



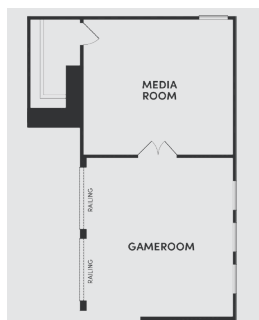
ADDITIONAL OPTIONS:



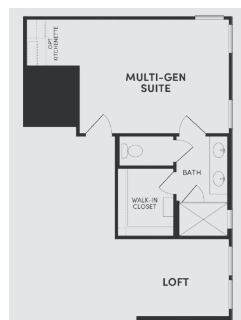
Ext. Cov. Patio



Bedroom 5/
Bath 3



Media Room



Multi-Gen
Suite



Bath 4

Middlebury: Available Elevation Options



TRADITIONAL



MODERN PRAIRIE



MODERN EUROPEAN